

ENVIRONMENTAL HEALTH AND SAFETY

CONSTRUCTION SAFETY, ABATEMENT AND REMEDIATION

DANGERS OF SILICA DUST



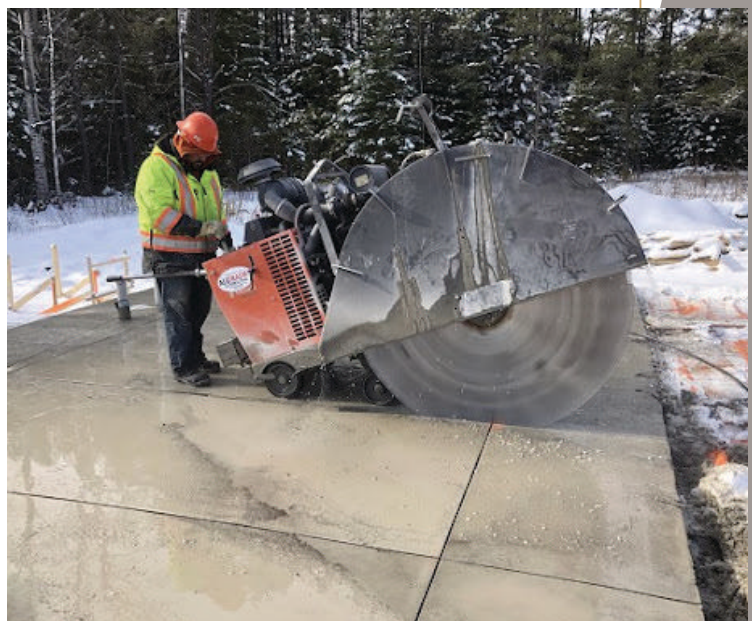
Getting to the nitty-gritty of grit

- Silica dust is a known hazard resulting from grinding or cutting concrete or masonry
- Due to the abrasive nature of the micro-particles, silica dust is a hazard not only to health and safety, but also to mechanical equipment
- Airborne dust can enter respiratory pathways and cause permanent damage to the lungs
- When workers are cutting concrete, means of dust control must be employed by using wet-cutting, HEPA vacuums or a combination of both
- Personal protective equipment (PPE) is to be worn at all times when cutting materials
- If work is being done on campus, bystanders should avoid the area
- Contact EHS with any concerns related to silica dust and associated safety measures on campus



Administrative Operations

EHS Construction Safety
Ryan Tyson 765.494.1019



A worker wet-cutting concrete to reduce silica dust presence